

# Argyll and Bute Community Learning & Development (CLD) Plan 2021 - 2024

CLD aims to work with community groups and people to take part in learning.



CLD is delivered by different groups in Argyll and Bute. The areas which are delivered are decided by asking our community what they need



Work is focused on supporting people so they can bring about change in their lives.

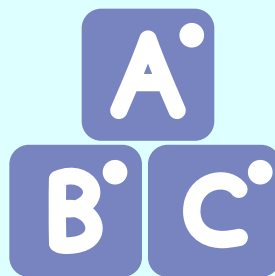


The six areas which are being delivered are...



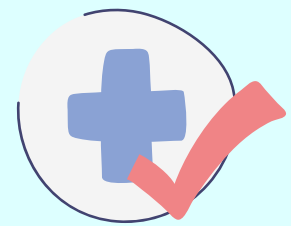
Digital Skills

Ability to access and skills to use technology



Core Skills

Skills for learning, life and work



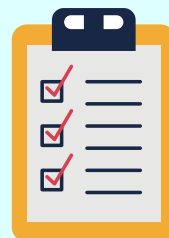
Health

Physical and mental wellbeing support



Your Voice

Have a say in the way CLD is delivered in Argyll



CLD Learner Offer

Improve the offering of CLD opportunities in Argyll and Bute



Better Partnership working

All partners work together to support the community